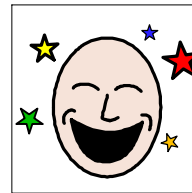
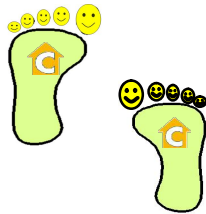
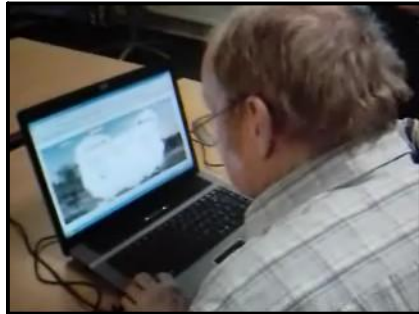
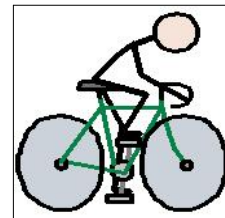
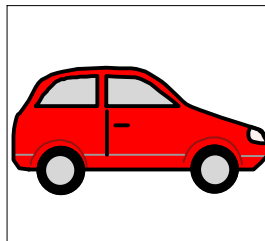
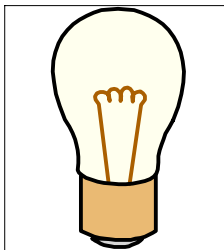




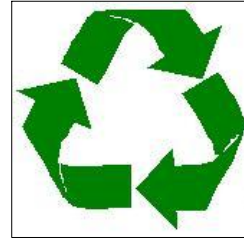
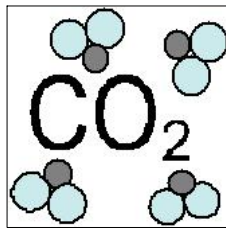
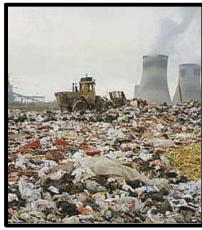
We worked in groups on laptops and worked out our carbon footprint on <http://actonco2.direct.gov.uk>. Have a look at the website. It is fun to do.



Some of the questions you are asked is about the electrical appliances you have in your home and how you travel when out and about.

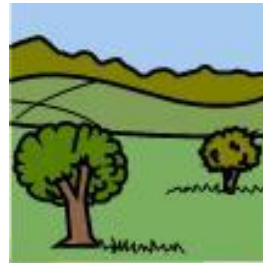


At the end you are given a total which is how many tonnes of CO₂ you are producing in your everyday life.



The people living in Pontardawe had the best of 10.92.
Then people in Skewen had 10.94.
People in Neath had a score of 12.72.

Everyone said they will try and change how they live and try to get a lower total at the next meeting.



If you have any questions about this group please contact Julie at the office.

The next meeting will be in April and we will let you know the dates.

